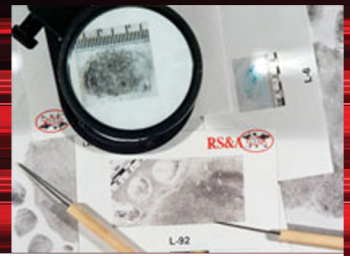




# RON SMITH & ASSOCIATES, INC.



## IAI LATENT PRINT CERTIFICATION TEST PREPARATION TRAINING

### Course Description

Have you been thinking about taking the International Association for Identification (IAI) Latent Print Certification Examination but are not sure if you are ready? Does your agency require you to be certified within a certain timeframe and that time is approaching? Or, do you wish to achieve the high personal goal of attaining official recognition by the world's largest and oldest forensic organization as a Certified Latent Print Examiner? If you answered "yes" to any of these questions, then this is the course for you. After numerous requests and years of planning, this course has been developed and is now offered to you.

This class will consist of "timed drills" so that the student can learn how to work in a "timed" environment and to assist them in evaluating their strengths and weaknesses in the various areas of the friction ridge science which will be represented on the actual test. Near the end of the week the student will take an 8 hour practice examination representative of the actual IAI certification test, including written questions, pattern interpretations and latent print comparisons.

After the practice examination has been scored and reviewed by the instructors, a general critique of the class results will be conducted and a personal evaluation of the student's strengths and weaknesses will be provided in preparation for the actual test.

Students will receive instructions on:

- Review of "Searching Smart" skills
- Review of "Palm Print Orientation/Location
- Drills for speed
- Overview of IAI Latent Print Certification Program
- Review of historical data as it relates to fingerprints
- Mock IAI Certification Exam

### Target Audience

This course is designed for those experienced examiners who are eligible, or who will be eligible in the near future to take the IAI Latent Print Certification Test and want to identify their readiness for the examination.

It is important to understand that this course is not designed to teach the students how to apply ACE-V methodology, nor how to conduct latent print comparisons, but rather to evaluate these skills and abilities in a testing environment.

### Must Bring to Class

Students should bring all of the equipment that they plan to use during the actual certification test, i.e. fingerprint magnifiers, ridge counters, etc. These items will not be provided by the instructors so it is necessary for each student to bring their own equipment with them to class. Students have the option to bring a small desk lamp and extension cord with them for added light.

Each student must bring a fingerprint magnifier, ridge counters are encouraged but optional

Dress is business casual as the course will be conducted in a professional environment and facility.



**Class Instructor:**  
**Debbie Benningfield**  
**CLPE**

Tuition: \$650.00  
5 Days

## Daily Schedule

	Day 1	Day 2	Day 3	Day 4	Day 5
Hour 1	Intro of Instructors, Students and Course Objectives	Timed Drill 1	Timed Drill 4	IAI MOCK CERTIFICATION TEST	Review of Test
Hour 2	Drill A	Drill 1 Review			
Hour 3	Review of Searching Smart	Timed Drill 2			
Hour 4	Review of Palm Print Orient/Location	Drill 2 Review			Overview of IAI LP Certification Program
Lunch	Lunch	Lunch	Lunch	Lunch	Lunch
Hour 5	Orient/Location Exercise	Timed Drill 3	Drill 4 Review	TEST CONTINUED (Class may be up to 10 hours. Students are free to leave class when they completed the exam)	Presentation of Certificates
Hour 6	Feature Drill		Pattern Recognition Review		
Hour 7	History Review Presentation		Test Taking Strategies		
Hour 8	Review of Drills		Overview of Mock Cert Test Procedures		

NOTE: On the day of the exam, students will be given a full 8 hours to complete the exam. Lunch and breaks will not be counted against the 8 hours. Due to the potentially extended day on Thursday, the day of the exam, this class will end no later than 1pm on Friday.

## Should be Able to Perform

Upon completion of this course, students will know their strengths and weaknesses in the science of fingerprint examination as it relates to the certification requirements and their readiness to pursue IAI Latent Print Examiner certification.

## Recommended Reading

Information on the recommended reading for the IAI Latent Print Examiner Certification can be found on the IAI website at: [http://www.theiai.org/certifications/latent\\_print/reading.php](http://www.theiai.org/certifications/latent_print/reading.php)

## Pre-Requisite

It is recommended that the student review the current requirements for certification and that they review the recommended written materials before attending this course. Each student will be tested on their knowledge of this material throughout the course and as part of the 8 hour practice examination.

Information concerning the IAI Latent Print Examiner Certification can be found on their website at: [http://www.theiai.org/certifications/latent\\_print/index.php](http://www.theiai.org/certifications/latent_print/index.php)